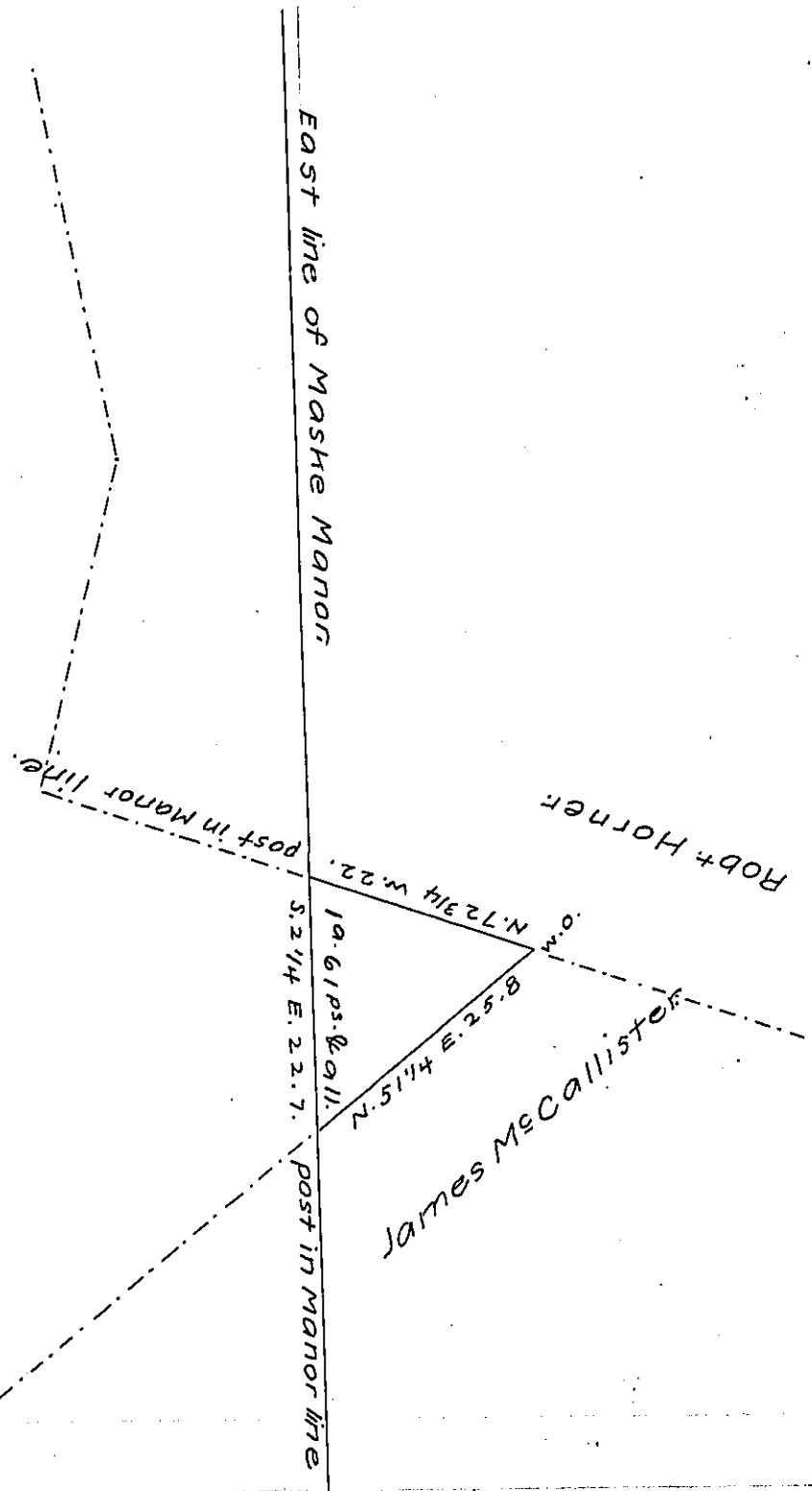


FORM No. 1.

residue of tract in the Manor of Mashe
now Philip Heagy.



Situate in Mountjoy Township Adams County Being part
of a tract surveyed by Charles Lukens, D.S., A.D. 1765. In pur-
suance of a warrant for 300 a^s granted to William Scott
dated April 16th 1765 and by said survey said to contain
260 a^s & all. Surveyed for Philip Heagy October 21st 1818 con-
taining one acre sixty one perches & all. the residue of the
tract lying in the Manor of Mashe.

saml Sloan. D.S.

To Jacob Spangler, Esq;
Surveyor Gen^l

IN TESTIMONY that the above is a copy of the original remaining on file in
the Department of Internal Affairs of Pennsylvania, made
conformably to an Act of Assembly approved the 16th day of
February 1833, I have hereunto set my hand and caused
the Seal of said Department to be affixed at Harrisburg,
this third day of January, 1907

Isaac P. Brown
Secretary of Internal Affairs.